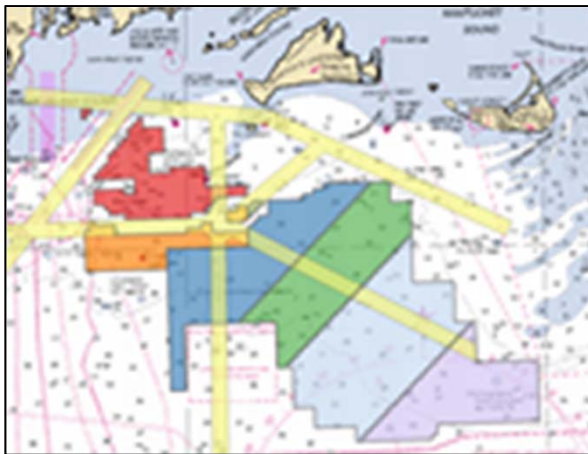




NOAA
FISHERIES

Greater Atlantic
Regional
Fisheries Office



Vessel Transit Patterns: AIS and VMS Data

Douglas W. Christel
Benjamin Galuardi

December 3, 2018

AIS Transit Maps

Parameters:

- 100 m grid cells
- >5 knots is transiting

Limitations:

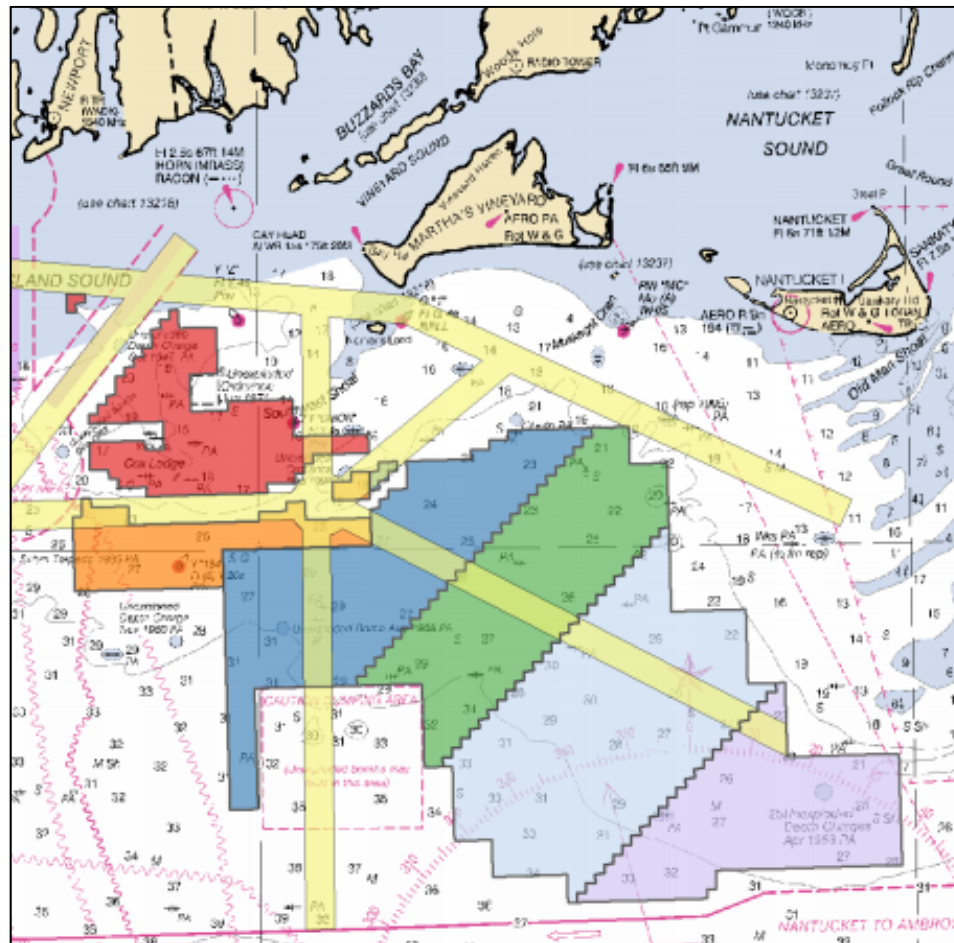
- Only required for vessels >65' (avg. NE vessel: 45')
- Does not include recreational vessels
- Can be turned off



<https://www.northeastoceandata.org/data-explorer/>

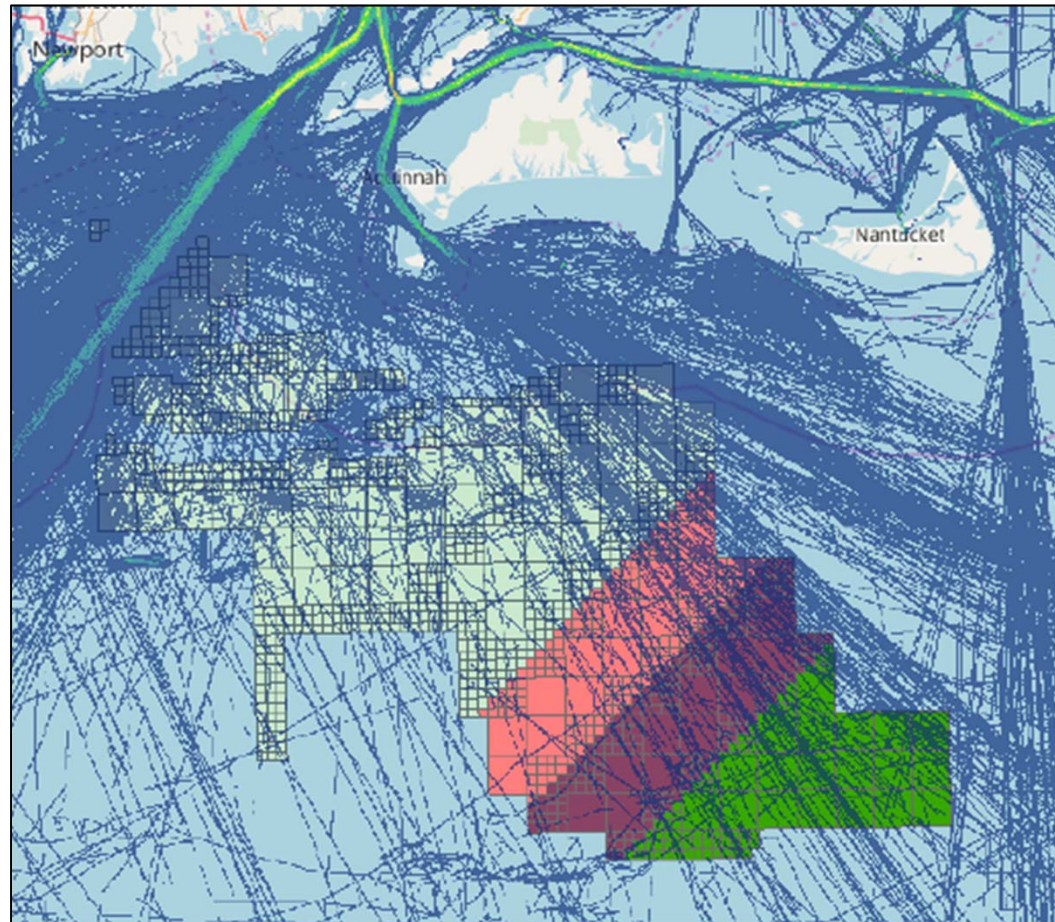


Transit Proposal



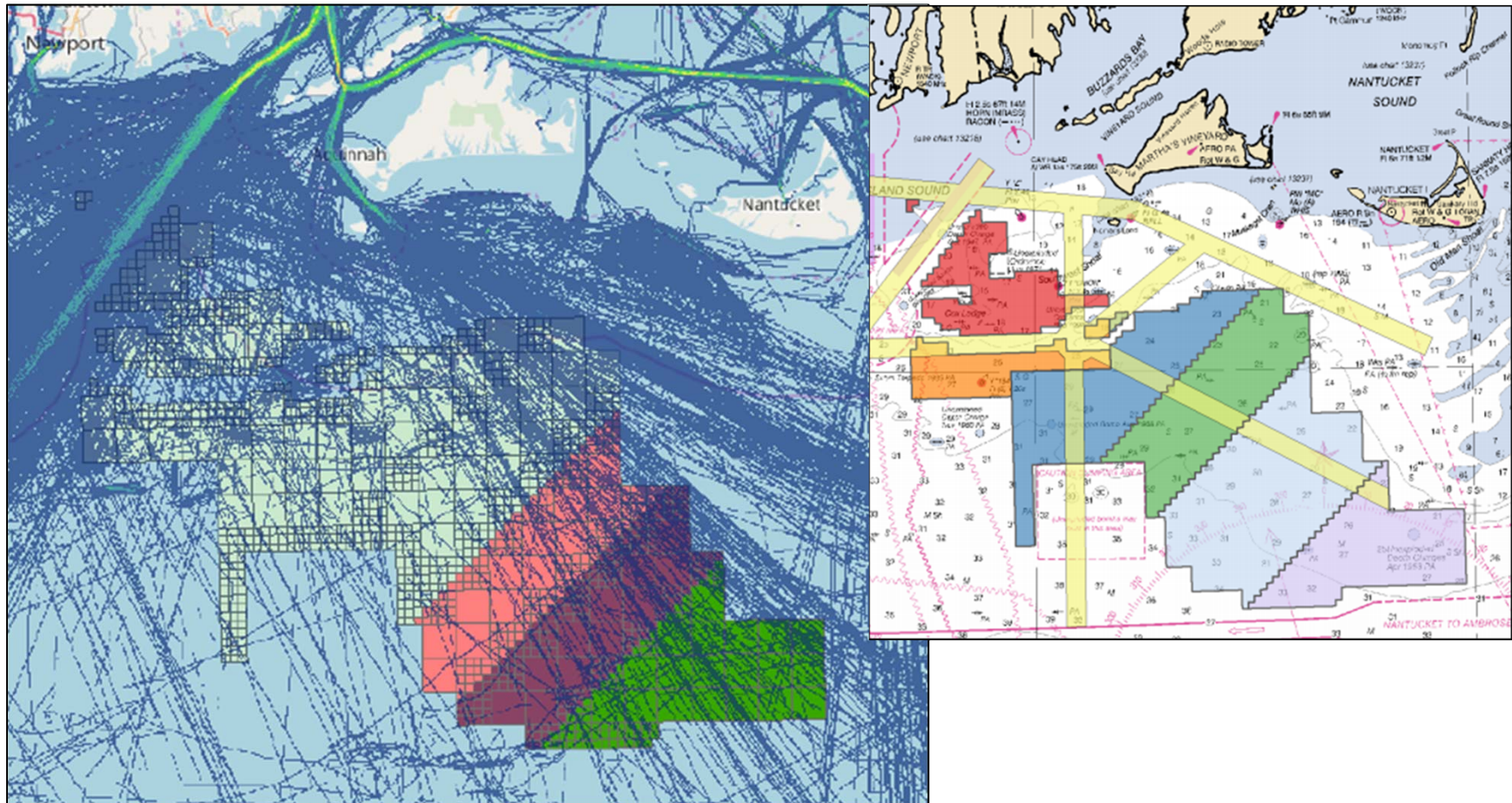
September 19, 2018

AIS Transit Maps



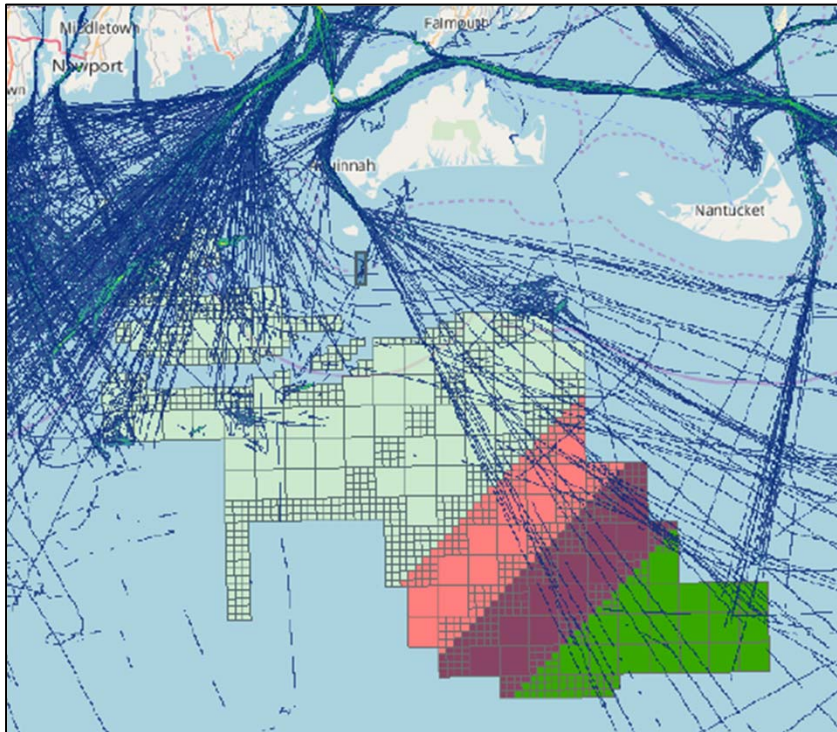
2017 Commercial Fishing Vessels

AIS Transit Maps

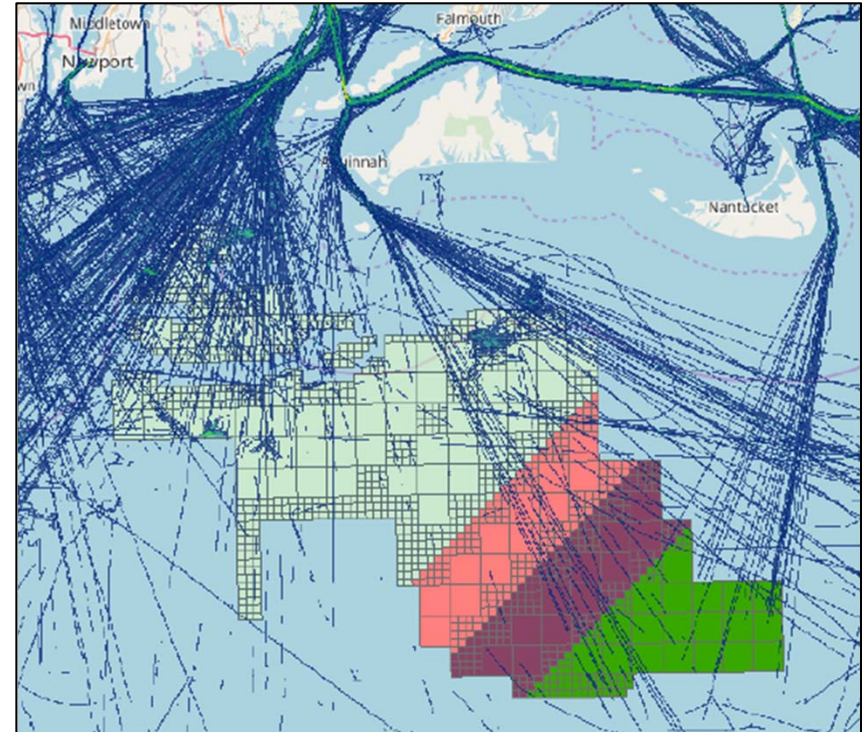


2017 Commercial Fishing Vessels

AIS Transit Maps



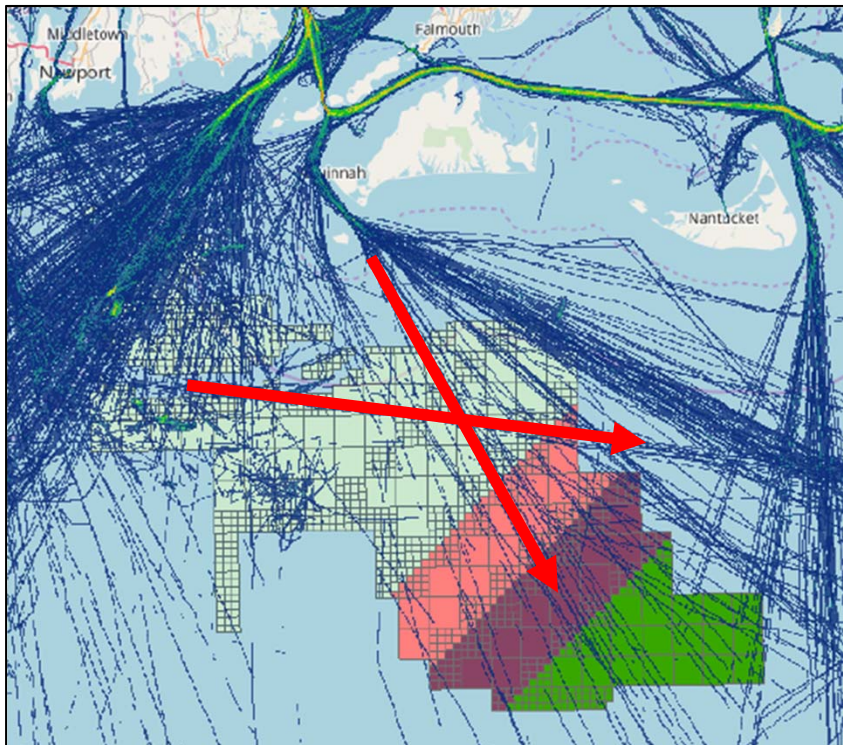
January



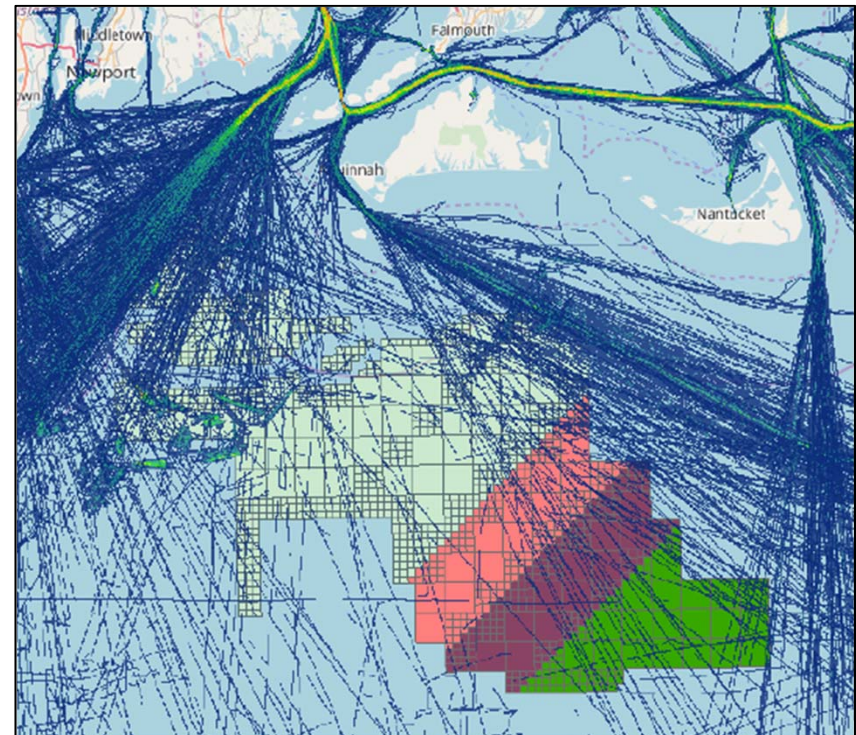
February

2015-2017

AIS Transit Maps



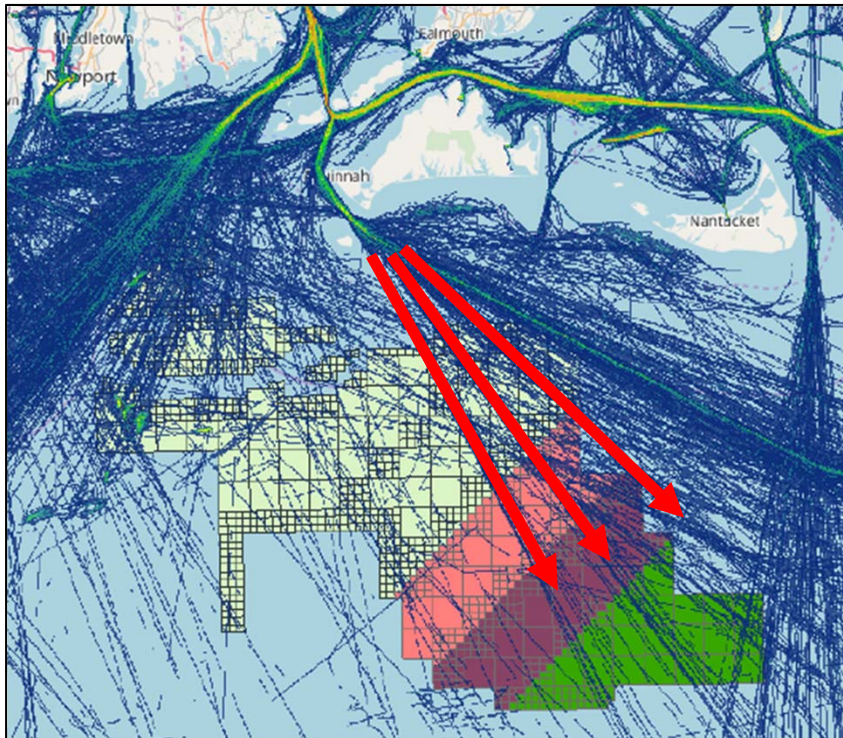
March



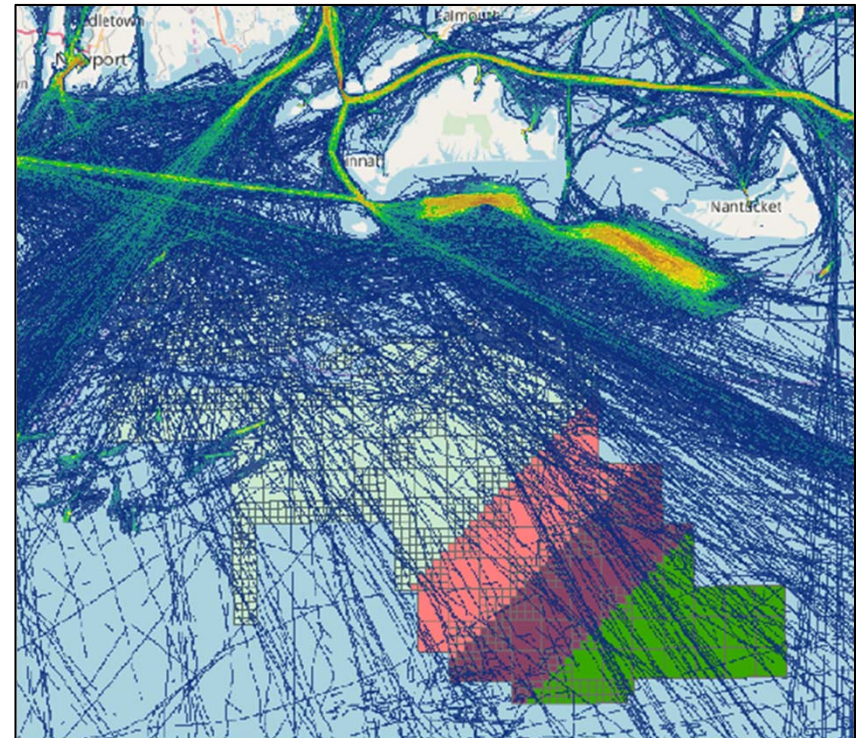
April

2015-2017

AIS Transit Maps



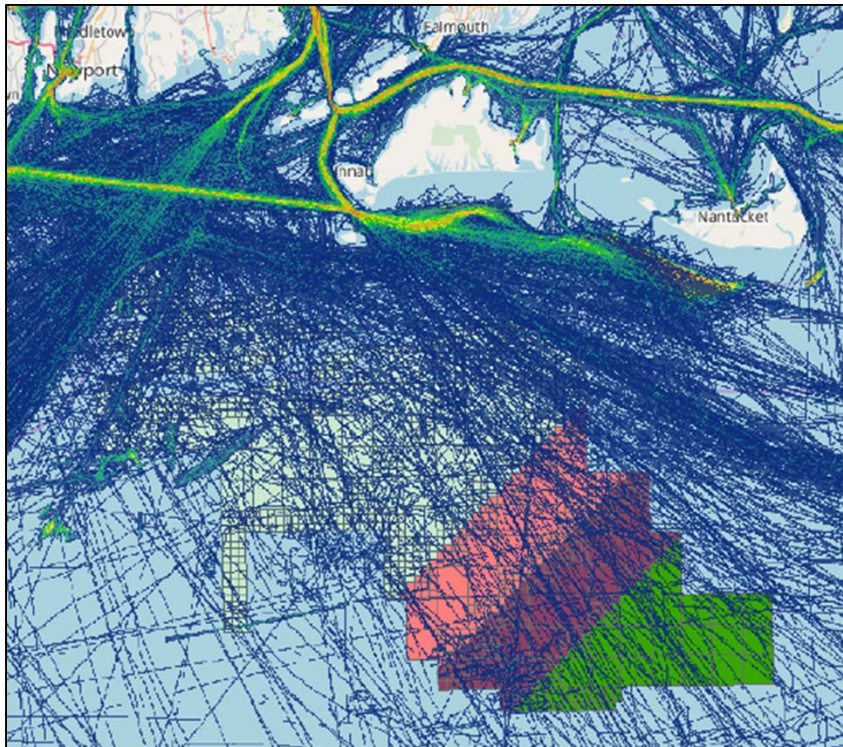
May



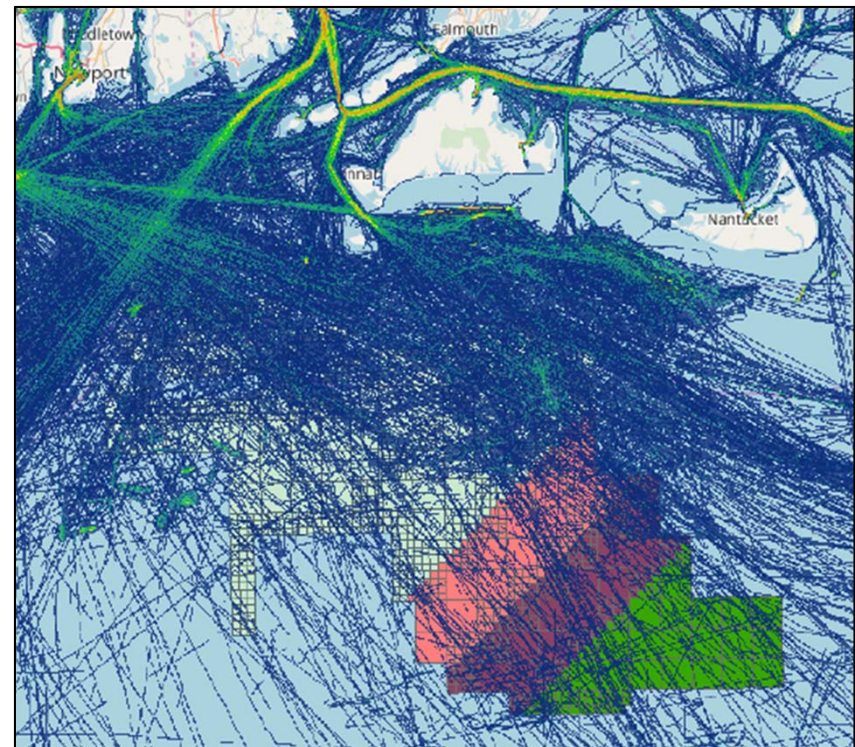
June

2015-2017

AIS Transit Maps



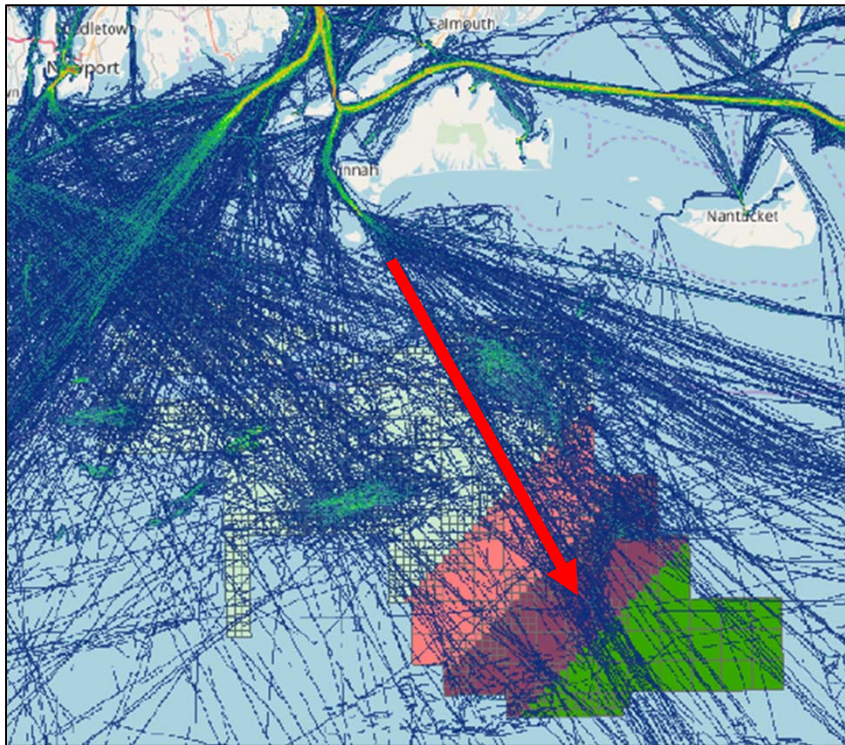
July



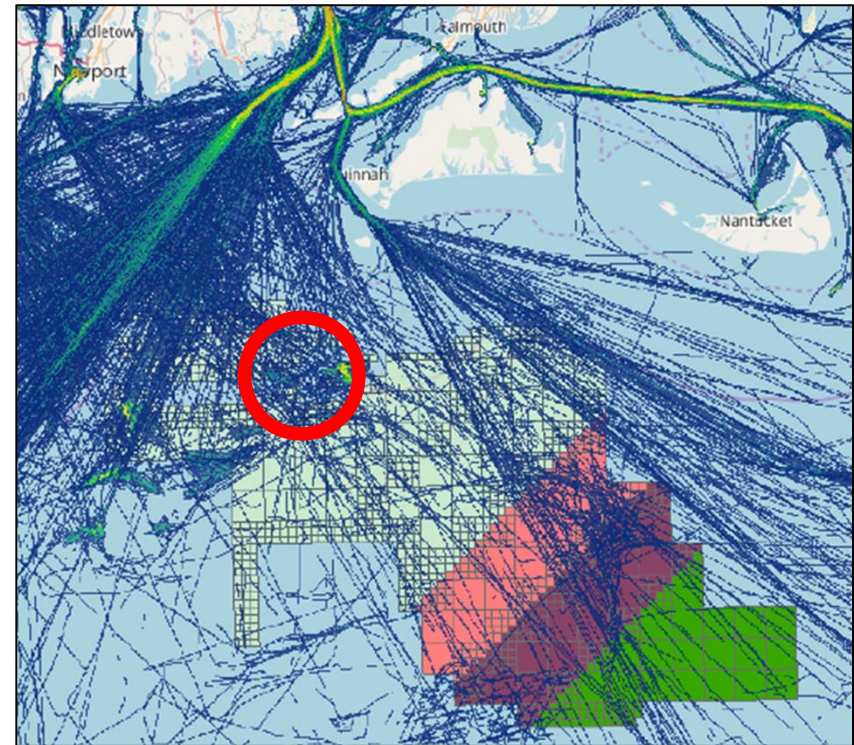
August

2015-2017

AIS Transit Maps



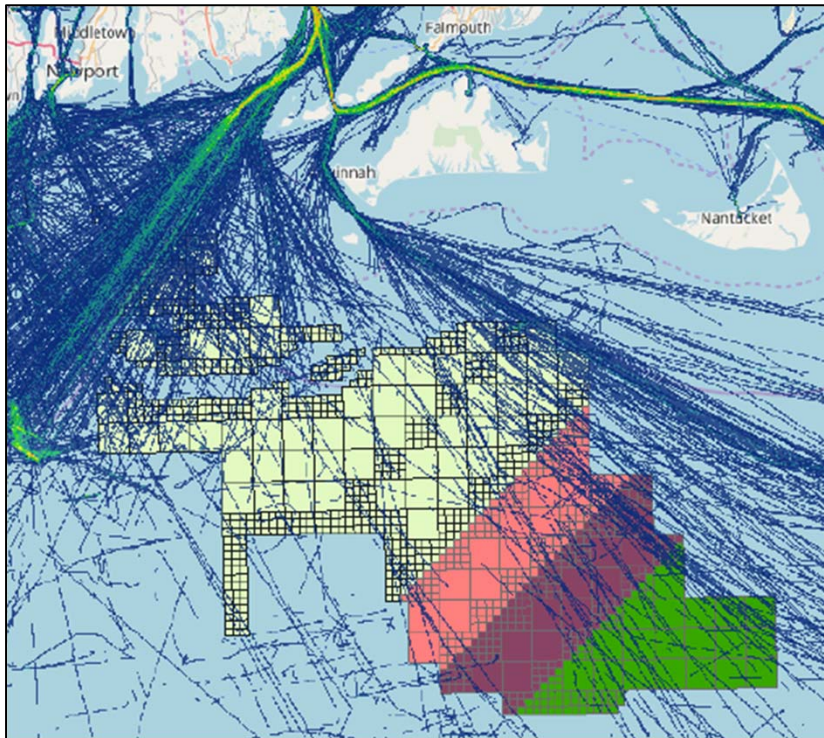
September



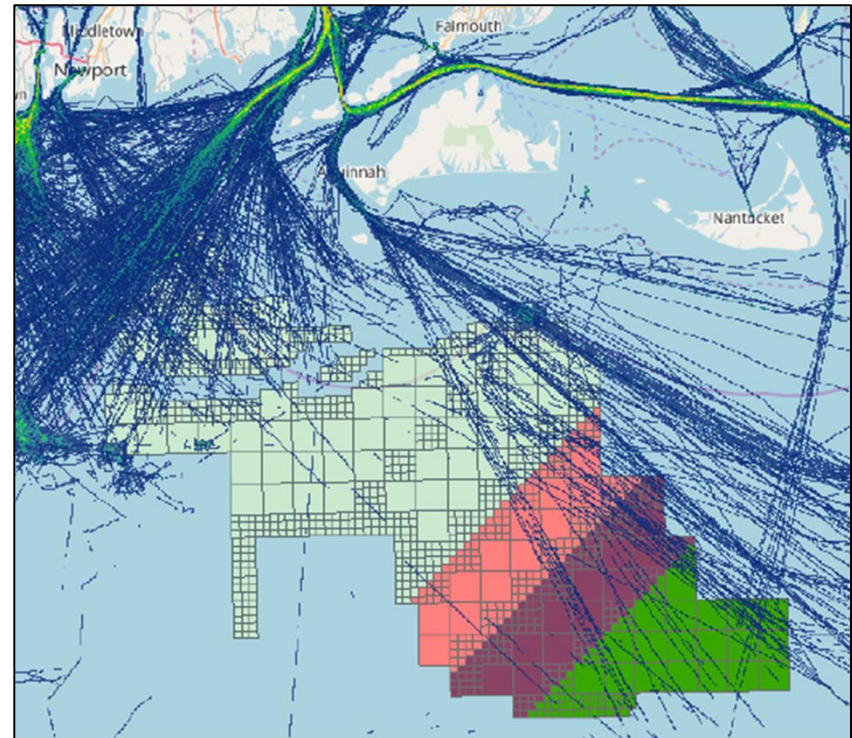
October

2015-2017

AIS Transit Maps



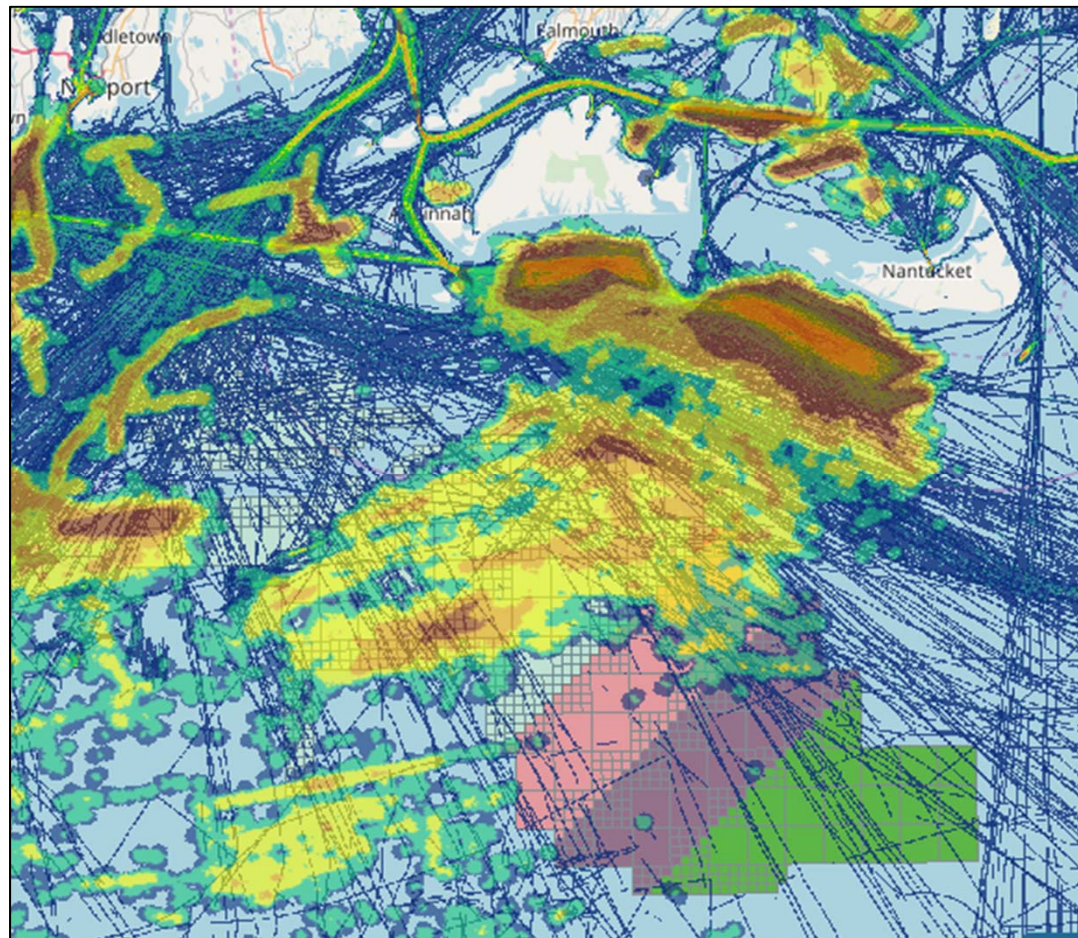
November



December

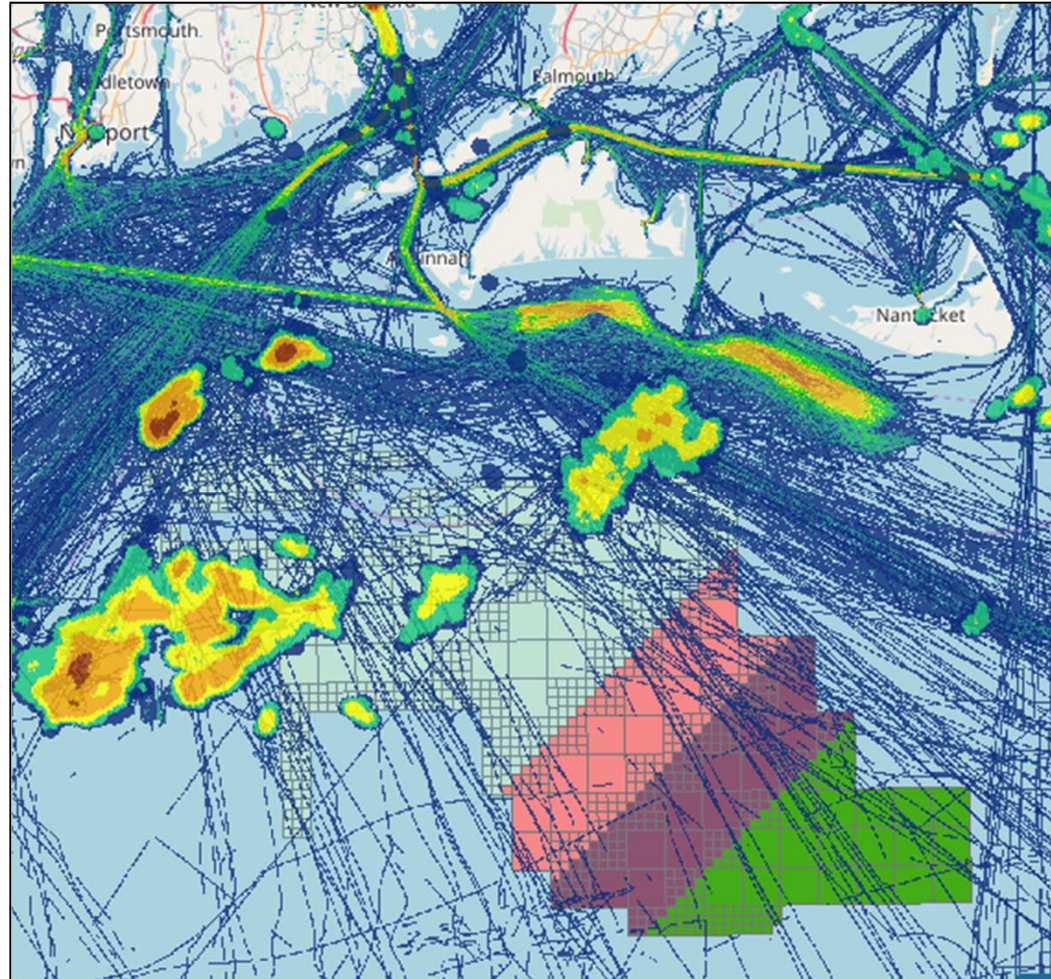
2015-2017

AIS Transit and VMS (<4 knots)



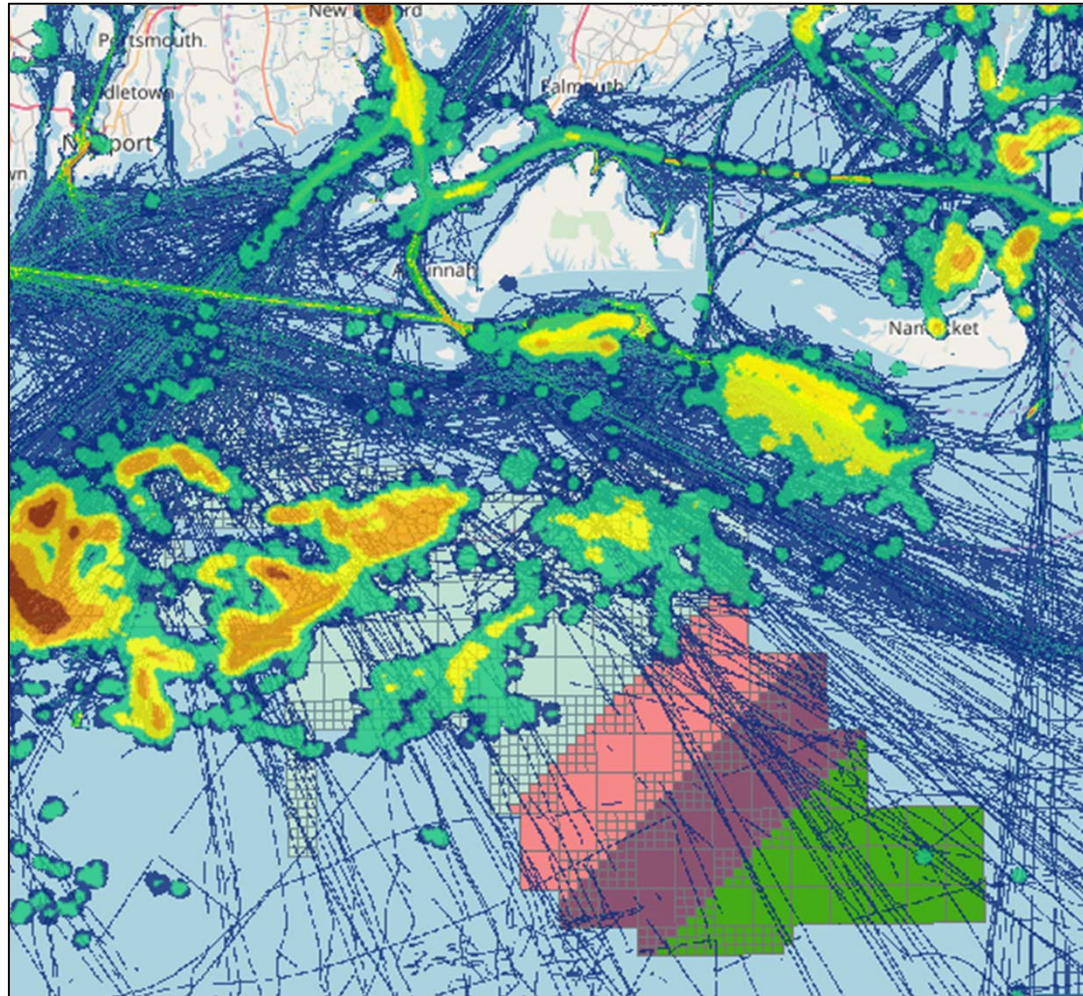
2015-2016

AIS Transit and VMS (<4 knots)



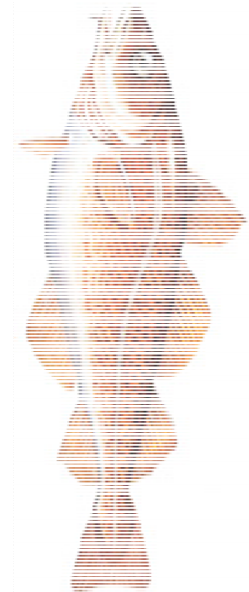
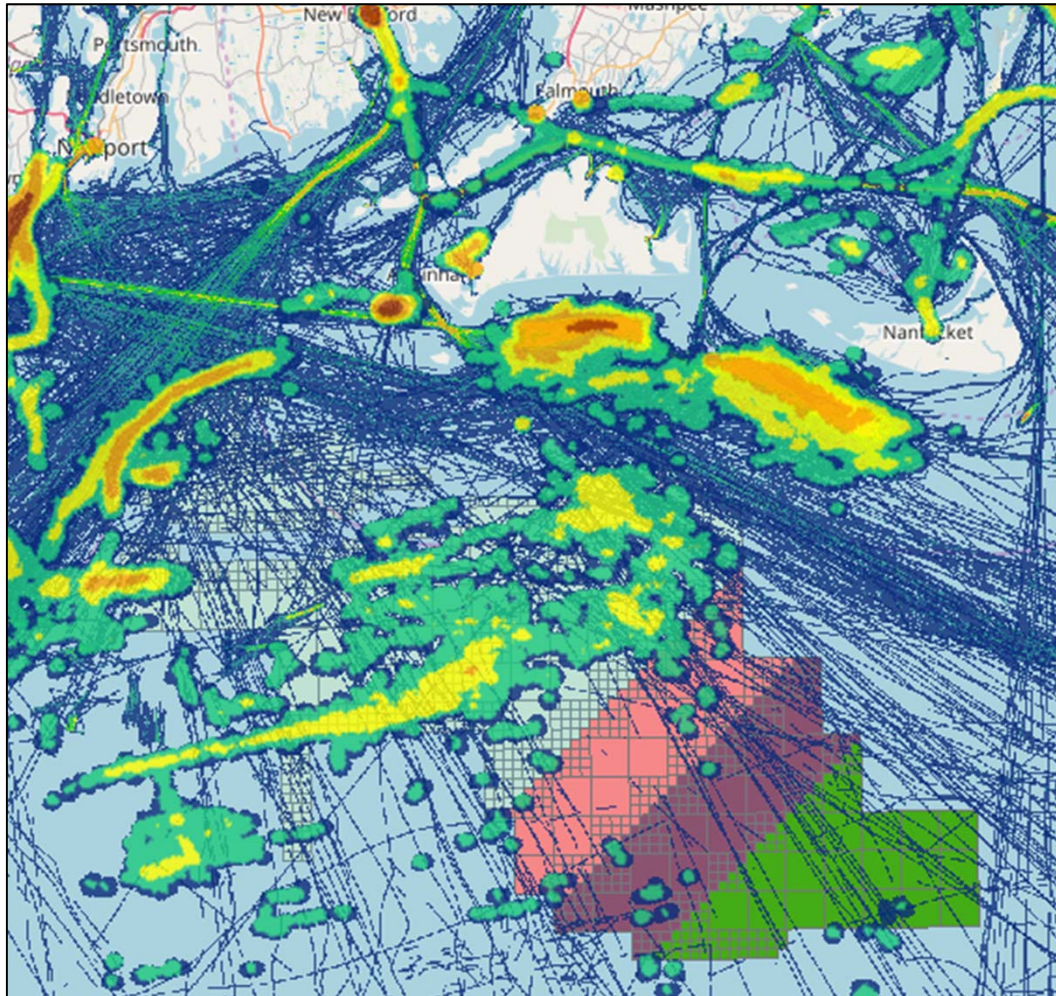
2015-2016

AIS Transit and VMS (<5 knots)



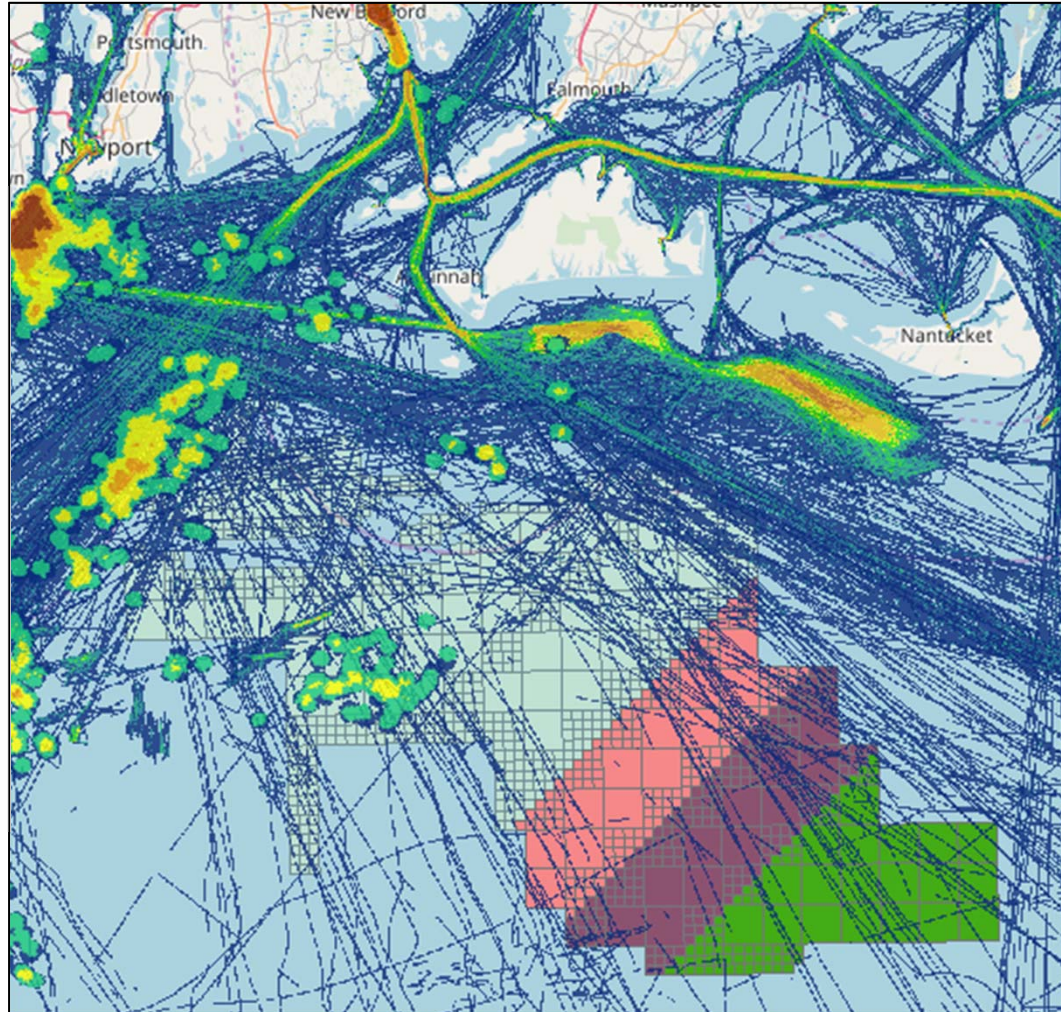
2015-2016

AIS Transit and VMS (<4 knots)



2015-2016

AIS Transit and VMS (<4 knots)



2015-2016

VMS Totals Maps

Parameters:

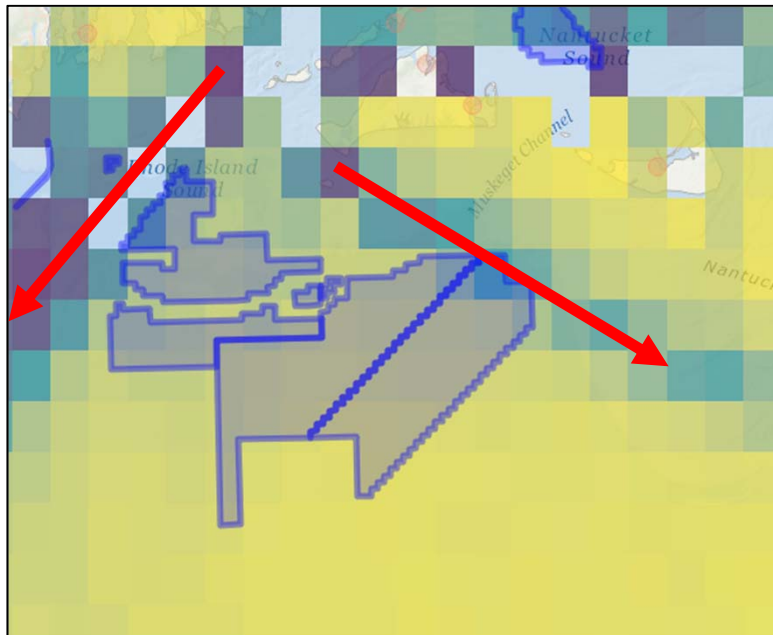
- Includes transit and fishing
- 5 nm grid cells
- Effort in hours/cell
- Cells with <3 unique permits are masked
- **All fisheries codes are included**

Limitations:

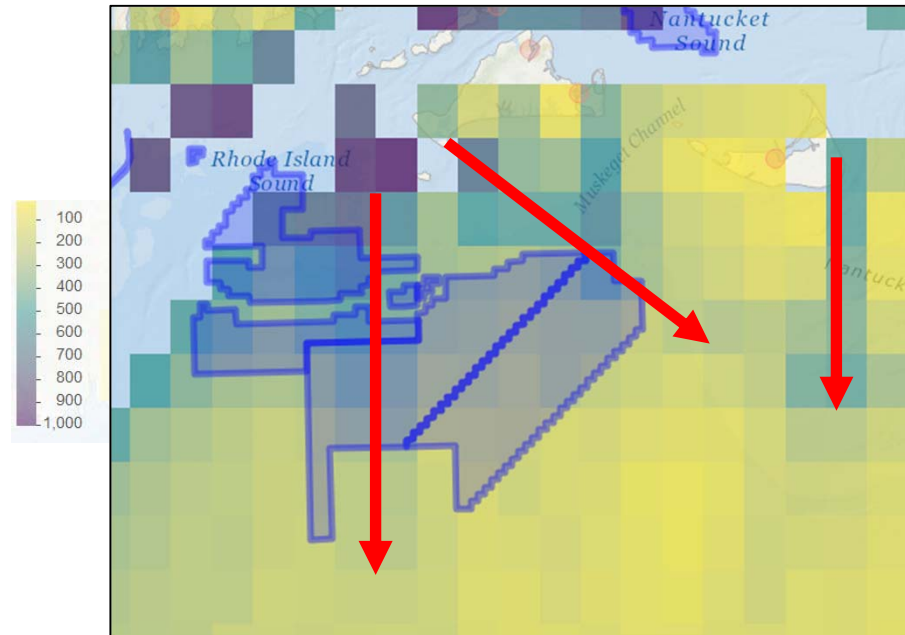
- Resolution (5 nm grids)
- No recreational vessels
- Fine scale maps require more time



VMS Totals Maps



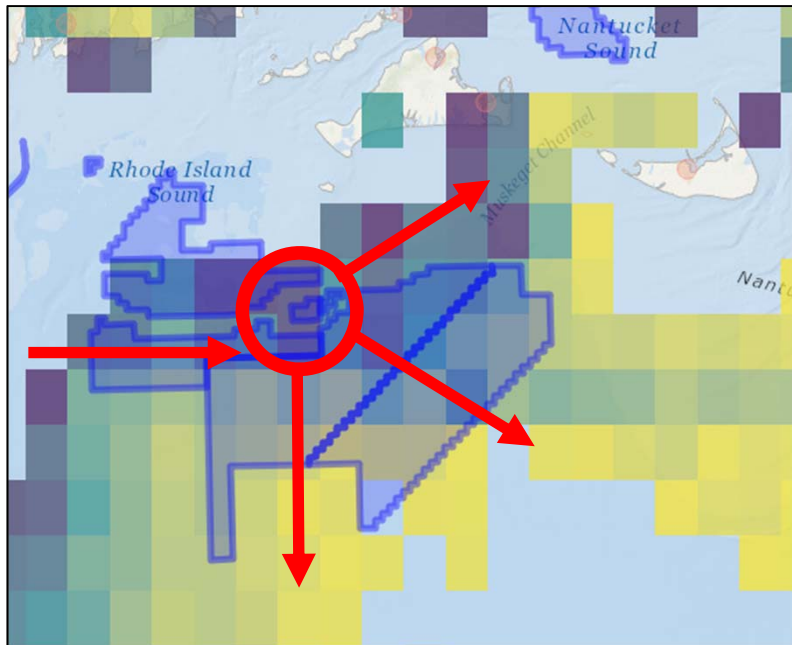
2010



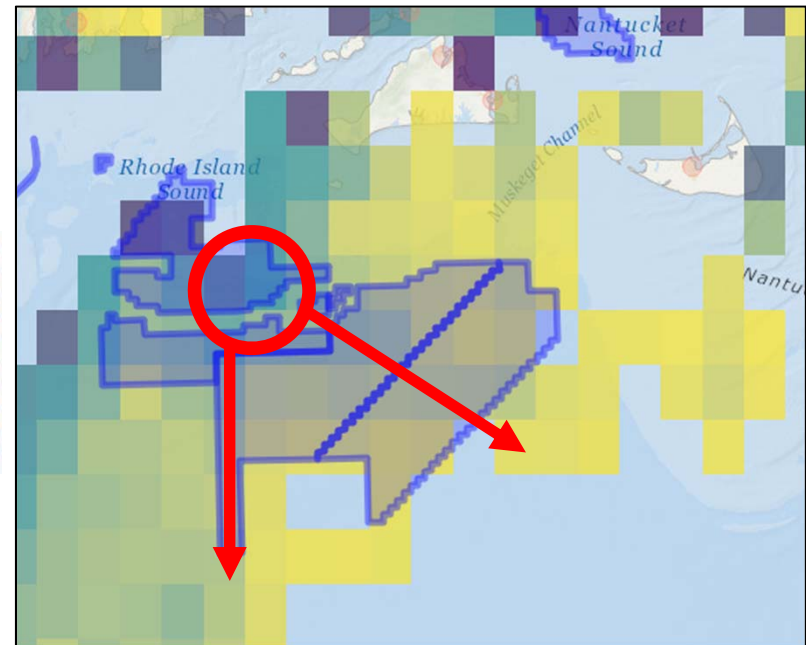
2016

All Fishery codes

VMS Totals Maps



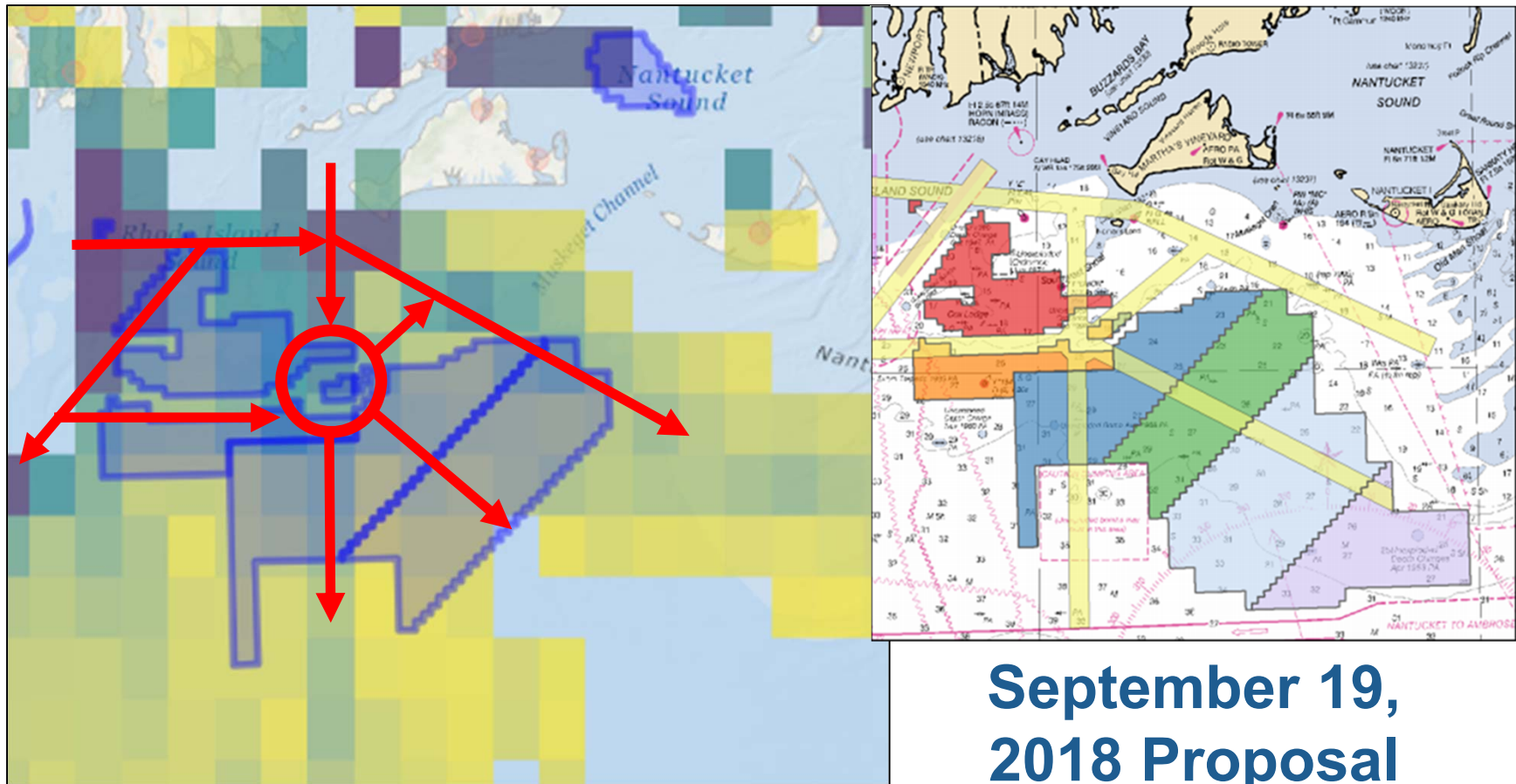
2016



2017

“DOF” Codes

VMS Totals Comparison



DOF 2013

September 19,
2018 Proposal

Evidence of Consistency



**NOAA
FISHERIES**

Greater Atlantic
Regional
Fisheries Office

Thank you!
Questions?

Douglas.Christel@noaa.gov
(978) 281-9141

Benjamin.Galuardi@noaa.gov
(978) 281-9187



NOAA FISHERIES