



**NOAA
FISHERIES**



BOEM
Bureau of Ocean Energy
Management

Fisheries and Offshore Wind Energy: Synthesis of the Science

SPEAKERS & PRESENTERS



Julia Beaty

*Fishery Management Specialist,
Mid-Atlantic Fishery Management Council*

Julia Beaty joined the Council staff in February 2015. She is the staff lead for black sea bass, chub mackerel, and offshore wind energy development.



Silvana Birchenough

*Senior Marine Ecologist,
Centre for Environment Fisheries and Aquaculture Science*

Silvana has 15 years of post-doctoral experience in marine ecology. She is a researcher and scientific advisor on issues related to ecology and human activities. She works on understanding of long-term benthic changes resulting from climate change and ocean acidification.



Dr. Talya Ten Brink

GIS Coordinator, NOAA Fisheries

Dr. Talya ten Brink is the GIS Coordinator for the Greater Atlantic Region of NOAA Fisheries and a social scientist who researches coastal and marine ecological systems, marine spatial planning, offshore wind, and sense of place.



Hans Burchard
DHI Group

Dr. Hans Burchard is with the DHI Group.



Drew A. Carey, PhD
Chief Executive Officer, INSPIRE Environmental

Co-founder of INSPIRE Environmental, Drew's leadership drives the company's strategic vision. He has more than 30 years of experience addressing issues in marine science, environmental monitoring, and marine policy, which ensures the company routinely meets or exceeds client needs.



Doug Christel
Fishery Policy Analyst, NOAA Fisheries

Doug currently works as a fishery policy analyst in the Sustainable Fisheries Division at the Greater Atlantic Regional Fisheries Office (NOAA). My main duties are coordinating the management of the regional mackerel, squid, and butterfish fisheries and providing fisheries policy expertise during the review of offshore wind energy development projects.



Rodney Cluck
Chief, Bureau of Ocean Energy Management
Dr. Cluck is currently the Chief of the Division of Environmental Sciences where he leads the Environmental Studies Program, the scientific backbone that informs policy decisions regarding leasing and development of ocean energy.



Mike Conroy

Executive Director,

Pacific Coast Federation of Fishermen's Associations

Mike brings commercial fishing experience and a legal background to the table. Prior to taking the helm of the largest organization of commercial fishermen and women on the west coast, Mike consulted for a number of groups participating in most, if not all, fisheries operating off the West Coast. He also serves on the PFMC's Highly Migratory Species Advisory Subpanel.



Monique Coombs

Director of Marine Programs,

Maine Coast Fishermen's Association

Monique oversees MCFA's marine programs and fishing community engagement. Currently, she is working closely with commercial fishermen to develop ways to protect, persevere, and revitalize Maine's working waterfronts.



Walter Cruickshank

Deputy Director, Bureau of Ocean Energy Management

Dr. Cruickshank oversees the administration of programs that manage the development of the Nation's offshore resources in an environmentally and economically responsible way. These programs include leasing, plan administration, environmental studies, National Environmental Policy Act analysis, resource evaluation, economic analysis and the Renewable Energy Program.



Steven Degraer

Royal Belgian Institute of Natural Sciences

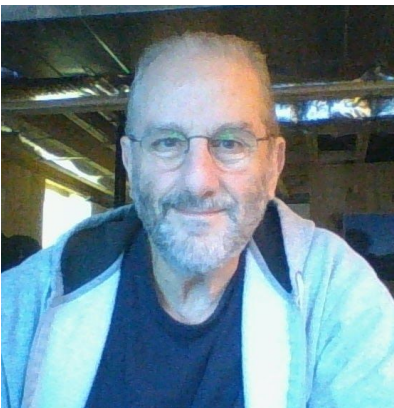
Dr. Steven Degraer started his scientific career in benthic ecology of intertidal and shallow subtidal temperate marine ecosystems at Ghent University. He is now coordinating OD Nature's Marine Ecology and Management team with an expertise in marine mammals and seabirds, rocky shore fauna and invasive species, and underwater noise.



Patrick Field

Senior Mediator, Consensus Building Institute

Patrick is Managing Director at the Consensus Building Institute and Associate Director of the MIT-Harvard Public Disputes Program. His primary focus is building agreements on and finding solutions for the built and natural environment across sectors, interests, disciplines, and organizations.



Kevin Friedland

Research Marine Scientist, NOAA Fisheries

Kevin Friedland is a researcher with the National Marine Fisheries Service at the Narragansett Laboratory in Rhode Island, USA. His current research is on the effects of bloom phenology on ecosystem function.



Benjamin Galuardi

Statistician, NOAA Fisheries

Benjamin currently works as a statistician in the Analysis and Program Support Division at the Greater Atlantic Regional Fisheries Office (NOAA). My main duties are work related to monitoring the Atlantic scallop fishery, and providing analyses for wind energy projects.



Andrew B. Gill, Ph.D.

Principal Scientist,

Centre for Environment, Fisheries and Aquaculture Science

Andrew is a Principal Scientist based at the Centre for Environment, Fisheries and Aquaculture Science (Cefas), UK. His current focus is on developing and leading Cefas-wide initiatives into the decarbonisation and sustainability agenda primarily through research of environmental and ecological interactions with offshore wind and marine renewable energy.



Madeleine Hall-Arber

Marine Anthropologist, Massachusetts Institute of Technology

As a marine anthropologist, Madeleine Hall-Arber's research on the impacts of regulatory change on fishing communities led to work with diverse advisory boards for the New England Fisheries Management Council, Atlantic States Marine Fisheries Commission and California's Ocean Protection Council. Her published work on New England fishing communities served as the basis for describing the human environment for several regional fishery management plans.



Jon Hare, Ph.D.
Director, NOAA Fisheries

Jon is the Science and Research Director of the Northeast Fisheries Science Center. He oversees science related to NOAA Fisheries' mission in the Northeast region including wild-captured fisheries, cultured fisheries, protected species, habitat, and ecosystem science.



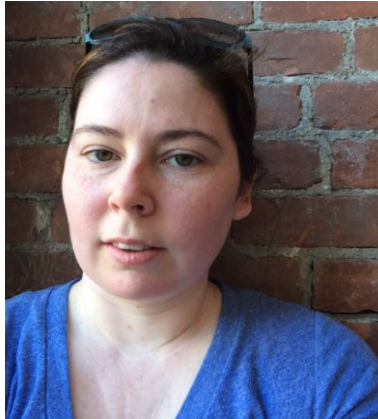
Annie Hawkins
Executive Director, Responsible Offshore Development Alliance

Annie is professionally dedicated to improving ocean resource management through advocacy and regulatory initiatives. She previously held positions in fisheries management and marine regulation including at the New England Fishery Management Council and NOAA's Large Marine Ecosystems program.



Lyndie Hice-Dunton
Executive Director, Responsible Offshore Science Alliance

Lyndie is a fisheries scientist with a multidisciplinary background in marine science, environmental policy, and offshore development. She came to the Responsible Offshore Science Alliance (ROSA) with a diverse perspective on the challenges different sectors face and their approaches to science after having worked in academia, state government, non-governmental organizations, and environmental consulting.



Fiona Hogan

Research Director, Responsible Offshore Development Alliance

As RODA's Research Director, Fiona is the point of contact for any grants RODA is working on. Prior to joining RODA, she worked at the New England Fishery Management Council.



Brian R. Hooker

Lead Biologist, Bureau of Ocean Energy Management

Brian is the Biology Team Lead in the Environment Branch for Renewable Energy within the Office of Renewable Energy Programs at BOEM. Brian began working with BOEM's Office of Renewable Energy Programs in 2010 to aid in the assessment and study of environmental impacts from offshore renewable energy along the U.S. Atlantic seaboard.



Zoë L Hutchison

Postdoctoral Research Fellow, University of Rhode Island

Dr. Zoë L Hutchison is a postdoctoral research fellow in the Graduate School of Oceanography, has been a collaborator with URI since 2015 and gained employment at URI in August 2018. Zoe is an applied behavioral ecologist and her research focuses on understanding how human activities that change the physical marine environment, influence the behavior and physiology of marine organisms.



Merlin Jackson

Thanet Fisherman's Association

Merlin Jackson was a commercial fisherman for 25 years and now represents the inshore fishing industry on a variety of issues including consultation processes tied to renewable energy development. He serves on the leadership team of the Thanet Fishermen's Association, a voluntary organisation that acts on behalf of its members, who operate vessels along the North Kent Coast.



Michael Jech, Ph.D.

Research Fishery Biologist, NOAA Fisheries

Michael is a fisheries biologist and underwater acoustics researcher with the Northeast Fisheries Science Center.



Lane Johnston

Programs Manager, Responsible Offshore Development Alliance

As RODA's policy fellow, Lane helps improve communication of the ongoing status of offshore development projects to RODA members and works to collate input from the fishing industry to inform RODA's focal areas. Lane is interested in bridging the conversation between marine policy, scientific research, and ocean resource users.



Teresa Johnson

Associate Professor of Marine Policy, University of Maine

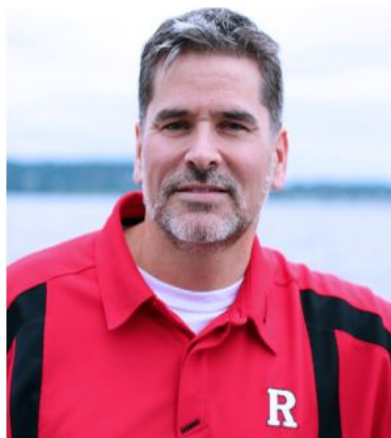
Teresa is an applied social scientist with expertise in human ecology, marine policy, and applied anthropology. In addition to her research, Dr. Johnson mentors graduate students and teaches graduate and undergraduate courses in marine policy and social-ecological systems.



Jeff Kneebone

Research Scientist, New England Aquarium

Dr. Jeff Kneebone is a research scientist with the Anderson Cabot Center for Ocean Life at the New England Aquarium. His research involves collaborations with fishery management entities and members of the commercial and recreational fishing community, and aims to generate novel biological and ecological data that can directly inform marine policy and foster improved fishery management and sustainability.



Josh Kohut

Associate Professor, Rutgers University

Josh has been a central player in the Rutgers University Center for Ocean Observing Leadership serving in several capacities including Technical Director and now as a member of the Faculty Leadership. Using networks of ocean observing technologies, his research and extension programs focus on the physical ocean processes that structure marine ecosystems.



Andrew Lipsky

Fisheries & Offshore Wind Lead, NOAA Fisheries

Andy joined NOAA and the Northeast Fisheries Science Center in 2016 and currently serves as Center's Acting Chief of Staff and Planning Officer in the Office of the Directorate. In this role he leads strategic and annual scientific and research budget planning across the Center's scientific enterprise.



Sean Lucey

Acting Chief of Staff/Planning Officer, NOAA Fisheries

Sean is a member of the Ecosystem Dynamics and Assessment Branch working on ecosystem modeling and integrated ecosystem assessments (IEAs). He started in the Ecosystem Surveys Branch as an at-sea biological technician working on various surveys.



Fred Mattera

President, Commercial Fisheries Research Foundation

Fred is a commercial fisherman and has been in the industry for over 40 years. Fred currently serves as the president of the Commercial Fisheries Research Foundation and also owns and operates the North East Safety Training Co., conducting safety training for commercial and recreational fishermen.



Camilla T. McCandless, Ph.D.

Research Fisheries Biologist, NOAA Fisheries

Cami McCandless is the Lead for the NOAA Fisheries Apex Predators Program (APP). She is responsible for management of the APP fishery-independent shark surveys and tagging program, conducting the annual bottom longline survey in Delaware Bay, and analyzing APP data for incorporation into the stock assessment process, status reviews, and Essential Fish Habitat designations for federally managed shark species.



Jason McNamee

Deputy Director, Bureau of Natural Resources (Rhode Island)

Jason has demonstrated a strong commitment to protecting and managing Rhode Island's marine resources sustainably through his work in running a field project, performing analytical stock assessments, managing data, providing support for the R.I. Marine Fisheries Council, chairing technical committees for the NEFMC and the ASMFC, filing regulations and managing the FWMFC staff and its fleet of research vessels.



Anna Mercer, Ph.D.

Chief, Cooperative Research Branch, NOAA Fisheries

Throughout her career, Dr. Mercer has worked to develop research projects that address the questions and concerns of fishermen and the scientific community, including at-sea monitoring of resources species and habitats to shore-side processing and marketing of underutilized seafood species.



Elizabeth (Lisa) Methratta, Ph.D.
Fisheries and Wind Scientist, NOAA Fisheries

Lisa is a marine ecologist with a background in fisheries and benthic ecology. In her nearly 20-year career, Lisa has worked on such topics as spatially explicit fish-habitat relationships on the Northeast U.S. Continental Shelf, oyster reef restoration and blue crab fishery dynamics in Chesapeake Bay, and more recently offshore wind effects on finfish populations.



Candace Nachman
Senior Policy Advisor, NOAA Fisheries

As a Senior Policy Advisor with NOAA Fisheries, Candace Nachman helps to raise the profile of the important science, management, and policy work that is at the core of the NOAA Fisheries mission, focusing primarily on offshore energy (including offshore wind development) and Arctic issues.



Chris Oliver
Assistant Administrator, NOAA Fisheries

As the Assistant Administrator for NOAA Fisheries, Mr. Oliver oversees the management and conservation of recreational and commercial fisheries including aspects of marine aquaculture, the preservation and maintenance of safe sources of seafood, and the protection of marine mammals, marine protected species, and coastal fisheries habitat within the U.S. exclusive economic zone.



Michael Palmer

Branch Chief, NOAA Fisheries

Michael Palmer is the Branch Chief for the Data and Information Systems Branch. In this role he is responsible for overseeing data management and analysis in support of the regional fisheries monitoring programs, and leading the design and development of information systems that will modernize the regional fisheries-dependent data collection infrastructure.



Carrie Pomeroy

Research Social Scientist, Institute of Marine Sciences, UC Santa Cruz

Carrie Pomeroy is a social scientist whose work addresses the social, economic and cultural aspects -- the “human dimensions” -- of marine systems as they affect and are affected by environmental, socioeconomic and regulatory factors, and its application to community planning, resource management, and broader decision-making. Her current work focuses on building capacity to address socioeconomic information needs and objectives for fisheries management, coordinating ocean space use, ensuring a safe and sustainable seafood supply, and adapting to climate change.



David Rudders

Assistant Research Professor, Virginia Institute of Marine Science

David Rudders is an Assistant Research Professor in the Department of Fisheries Science at the Virginia Institute of Marine Science where he also serves as Associate Director of the Marine Advisory Program. As Associate Director, he provides leadership for a portfolio of extension activities that include marine education, coastal communities, aquaculture and fisheries.



David Secor

Professor, University of Maryland

Dr. David Secor is USM Regents Professor at University of Maryland Center for Environmental Science. Dr. Secor's research spans a gamut of species from small forage fishes (menhaden and Atlantic mackerel) to large estuarine/coastal predators (striped bass, bluefish, bluefin tuna), endangered sturgeons, and his favorite model species, white perch.



Angela Silva

Social Scientist, Northeast Fisheries Science Center

Angela works as a Social Scientist of Offshore Wind & Fisheries on the NEFSC's Wind Team. Angela received a B.A. in Marine Affairs in 2011 followed by a Master of Arts in Marine Affairs in 2016 from the University of Rhode Island. Her master's work focused on commercial fishermen's job satisfaction, resilience and perceived ability to adapt to management changes in New England fishing ports.



Guy Simmons

Senior Vice President, Sea Watch International, Ltd.

Guy is the Senior V.P. of Marketing, Product Development, Fisheries Science and Government Relations at Sea Watch International, Ltd. He is actively involved in the fisheries management process for the Domestic Offshore Clam industry. He serves on the Board of Directors of the National Fisheries Institute and is also the Chairman of the NFI Clam Committee.



Ian Slayton

Physical Scientist, Bureau of Ocean Energy Management

Ian is a Physical Scientist at the Bureau of Ocean Energy Management.



Thomas Sproul

Associate Professor, University of Rhode Island

Dr. Thomas Sproul's research background is in Agricultural and Resource Economics, with a focus on risk modeling, insurance and risk management. At the University of Rhode Island, he shares his perspectives on offshore wind energy, and how resource economics research can help us understand the benefits and tradeoffs of developing wind farms.



Erica Staaterman, PhD

Bioacoustician, Bureau of Ocean Energy Management

Erica is currently a bioacoustician at the Bureau of Ocean Energy Management. She serves as a liaison between the scientific community, lawmakers, and industry representatives, helping to understand the issues and implement policy dealing with the effects of anthropogenic noise on marine life.



Kevin Stokesbury

Professor, University of Massachusetts

Dr. Kevin Stokesbury is a Professor of fisheries oceanography at UMass Dartmouth's School for Marine Science & Technology. His groundbreaking research using advanced underwater video technology has been pivotal in the revival of the scallop industry.

The technology, developed by him and his team of researchers at SMAST, counts and identifies fish while underwater, helping protect specific breeds.



Ole Svenstrup Petersen

Head of Marine Research, DHI Group

Dr. Svenstrup Petersen is the Head of Marine Research at the DHI Group.



Eric Thunberg

NOAA Fisheries

Eric's research has primarily focused on the role and contribution of economic analysis in fishery management policy and regulatory design. Eric was the Program Lead for commercial fisheries economics at the Office of Science and Technology from 2011-2015 before becoming Chief of the Social Sciences Branch at the Northeast Fisheries Science Center in 2016.



Mary Beth Tooley

Government Affairs, O'Hara Corporation

Mary Beth is employed by the O'Hara Corporation in Rockland, Maine, where she coordinates government and regulatory affairs for commercial fishing operations. Mary Beth is also a member of the New England Fishery Management Council.



Sofie Van Parijs, Ph.D.

Passive Acoustic Program Lead, NOAA Fisheries

Sofie has a BA and MA in Natural Science from Cambridge University, UK and a PhD in Zoology from Aberdeen University, UK. She worked as a postdoctoral scientist at James Cook University, Australia, the Norwegian Polar Institute in Norway, and Cornell University, USA before starting the passive acoustic research group at the Northeast Fisheries Science Center in 2006.



Kevin Wark

Owner, F/V Dana Christine

Kevin is owner/operator of the fishing vessel Dana Christine out of Barnegat Light, New Jersey, and a member of the Garden State Seafood Association.



Cisco Werner, Ph.D.

*Director of Scientific Programs and Chief Science Advisor,
NOAA Fisheries*

Dr. Francisco (Cisco) Werner is the Director of Scientific Programs and Chief Science Advisor for NOAA Fisheries. Cisco leads NOAA Fisheries' efforts to provide the science needed to support sustainable fisheries and ecosystems and to continue our nation's progress in ending overfishing, rebuilding fish populations, saving critical species, and preserving vital habitats.



Dara Wilber, PhD

Senior Scientist, INSPIRE Environmental

Dara is a fisheries ecologist who regularly works with INSPIRE to evaluate the biological impacts of seafloor disturbances. She plans and implements fish habitat assessments and develops monitoring protocols. Dara has close to 30 years of experience and has worked on a variety of projects spanning from beach

replenishment to channel dredging and most recently, offshore wind.